

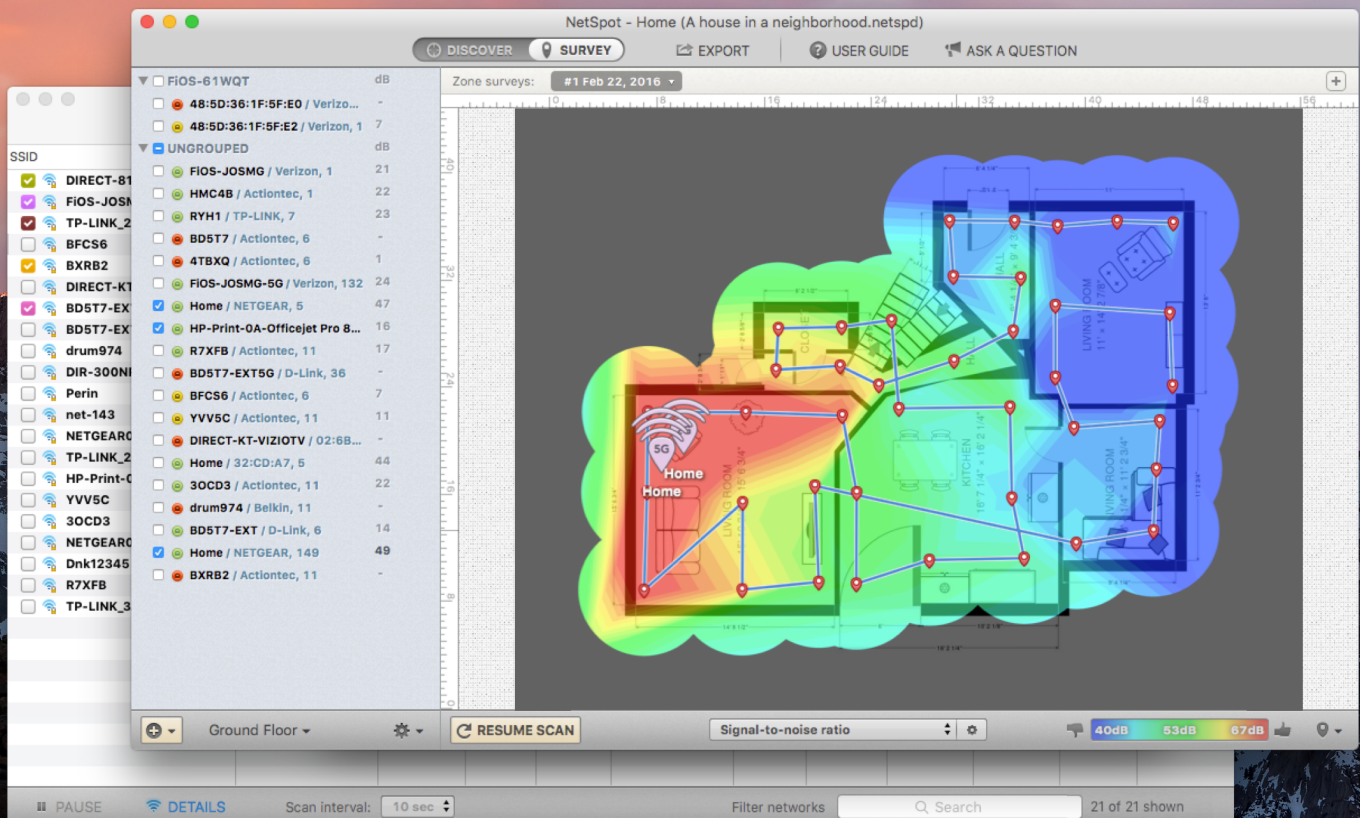


NetSpot for Mac

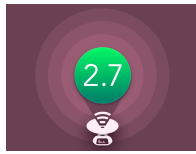
Professional app for Wi-Fi site surveys, analysis and troubleshooting.

For media inquiries please contact us at paul.johnson@netspotapp.com

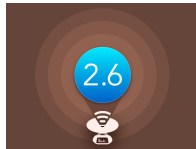
Last update: 10/04/2017 at 6:00 AM CET



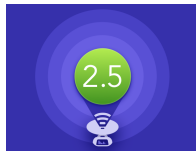
Press Releases



NetSpot 2.7 for macOS – minor update – June 20, 2017 – We are glad to inform you about the release of NetSpot for macOS, version 2.7. It's a minor release that improves several features and fixes a few bugs. See the changelog below for details. [Read more...](#)



NetSpot 2.6: new features and improvements – March 14, 2017 – We are happy to inform you about new useful NetSpot updates! The release of NetSpot 2.6 (for macOS 10.10 or newer) improves quite a few features and fixes a few bugs. [Read more...](#)



The First NetSpot in 2017 – January 9, 2017 – We know that many of you were waiting for the news about NetSpot, and here they come. We thank you for your kind support, you, as a client, are our biggest deal! [Read more...](#)

Our Story

We are a small team of IT experts with 10+ years of experience in networking, software, marketing and computer design. We strongly believe that professional Wi-Fi tools should not cost crazy money, and should be available to anyone, just like Wi-Fi itself.

NetSpot by Etwok is a professional app for Wi-Fi site surveys, analysis and troubleshooting.

We believe in NetSpot being a great helper to you at home and in the office, and if you are reading this, you most probably are well aware of what it does. We started in 2010, bringing NetSpot to Macs, then made it available to Mac App Store users, and finally presented a Windows version.

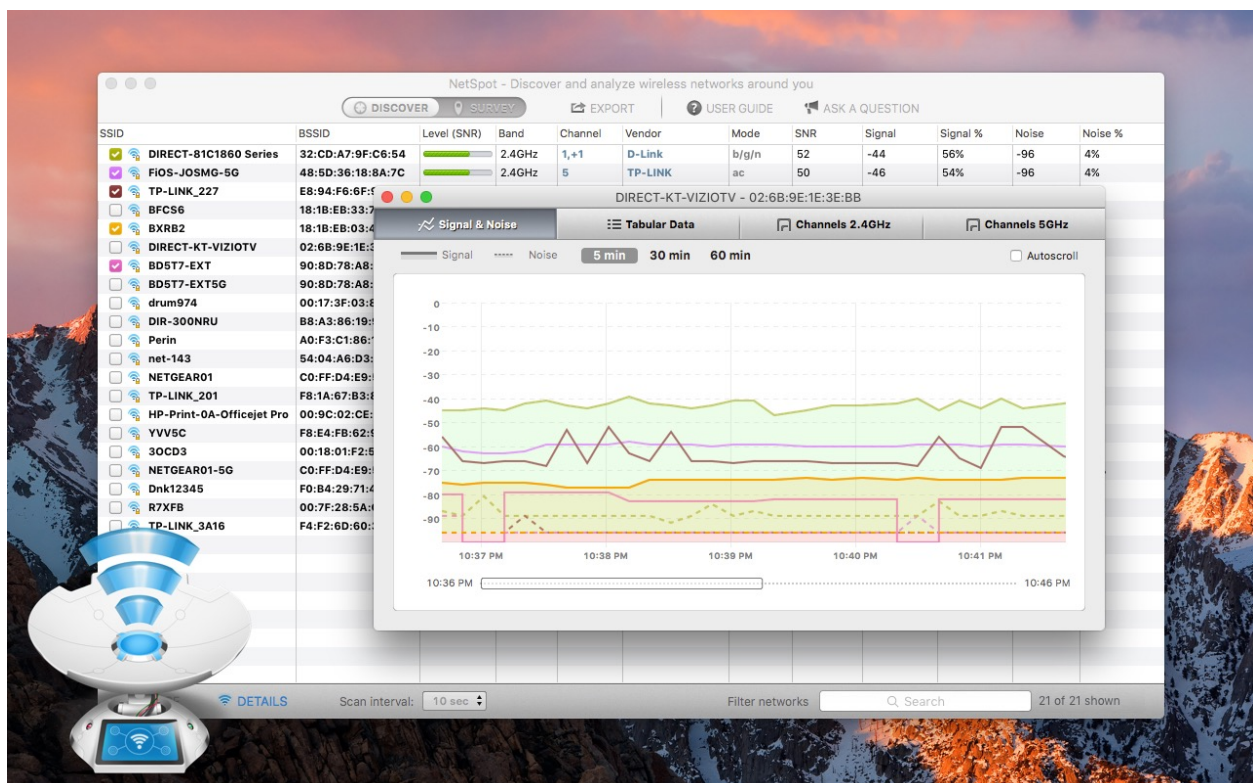
Currently working on iOS and Android editions, and a bunch of new micro-projects within the NetSpot platform.

What is NetSpot?

NetSpot is a Wi-Fi analyzer app for Wi-Fi site surveys, network management and troubleshooting.

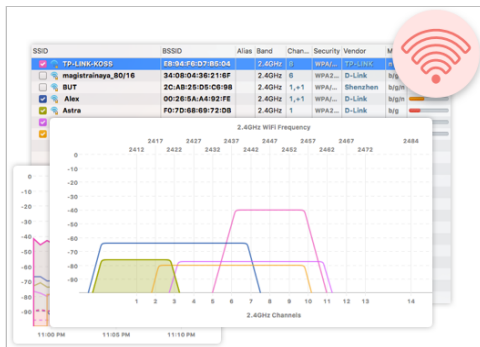
- Optimize hotspots' placement after finding dead zones without coverage
- Adjust channels' load and to assign them properly
- Improve wireless network planning and hardware deployment
- Locate the sources of interference
- Find signal voids and excessive coverage
- Explore neighboring wireless networks

Much, much more!

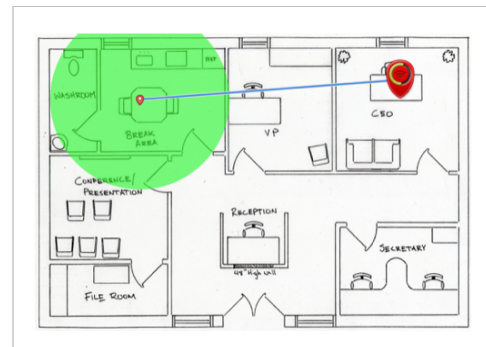


NETSPOT – DISCOVER MODE (DETAILS)

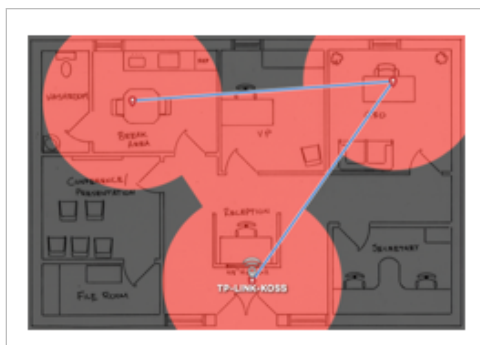
How does it work?



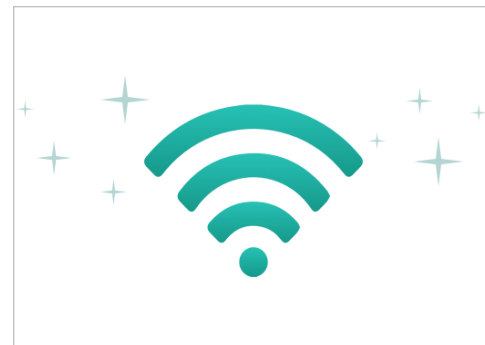
1 – Review your wireless environment in Discover Mode



2 – Load a map for your Wi-Fi survey. Collect some wireless site survey data



3 – Build a comprehensive heatmap of the network



4 – Final! Fix your problem!

Why are we the best?

- **500,000+** Users
- **6 years** at the market
- **Cross-platform** (Mac+Windows solution)
- **Simple to use** by home users and small office staff without Wi-Fi knowledge
- **Easy to go:** no need in any specific Wi-Fi adapters or drivers
- **Heatmap-like readout**
- **Unique** professional native solution for macOS

Media Resources

Writing a story about us? Here is all you may need for it:

Links

- Website – <https://www.netspotapp.com/>
- Email – onair@netspotapp.com
- NetSpot Direct Download – <https://www.netspotapp.com/download/NetSpot.dmg>
- Help – <https://www.netspotapp.com/help/>

Press Assets

[Product Video](#) and [Screenshots and Icon](#)

Contact Info

For media inquiries or if you would like to get an NFR license to write a review, please drop us a line to:

Paul Johnson

paul.johnson@netspotapp.com

Social

- Twitter – <https://twitter.com/netspotapp>
- Facebook Page – <https://www.facebook.com/netspotapp>